



EMERGENCY AND FIRST AID

AMBULANCE STRETCHERS

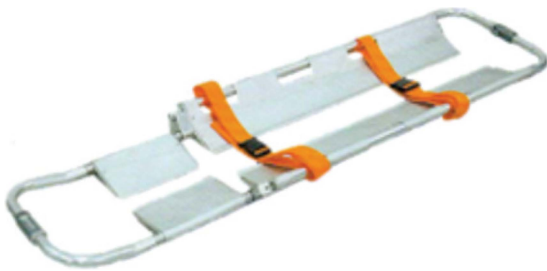
SPECIFICATIONS

Ambulance Multifunctional Stretcher

1. Aluminum Alloy
2. Completely automatic
3. Load Bearing: 250kgs



SCOOP STRETCHER



EMERGENCY STRETCHER



BASKET STRETCHER

STRETCHER-BASKET STRETCHER-TD+8
STRECTURE-FOLDING STRECTURE (TD010151)
STRECTURE-SCOOP STRECTURE (MLF999-E) (TD01016)
STRECTURE-FOLDING STRECTURE (TD01015) 2 FOLD
STRECTURE-SOFT STRECTURE (TD01080)
STRECTURE-FOLDING STRECTURE 4 FOLD
STRECTURE-AUTOMATIC WHEEL CHAIR TYPE (TD010132)
STRETCHER -MULTIPURPOSE # 31206
STRECTURE-MULTIFUNCTIONAMBULANCEAUTOSTRECTURE (TD010131)



BROSELOW HINKLE PEDIATRIC RESUSCITATION SYSTEM



AMBULANCE STRETCHERS

AE-4800 Broselow™ Pediatric Emergency Tape, 5/pkg. **VERSION 2007A**



SPECIFICATIONS

Measure: Measure the child with Broselow® tape. This gives you an accurate weight estimate, equipment sizes, and drug dosages.

Treat: Reach in the bag for exactly the right equipment for I.V., intubation, O₂ delivery, or intraosseous access. There's no guessing.

BURN SHEET STERIEL



STERILE BURN SHEET DISP. 60X96

CPR MASK WITH O2 INLET



EMERGENCY BLANKET

SPECIFICATIONS

Approximately the size of a band-aid box when folded, the Dyna Med® Emergency Blanket can be taken anywhere, anytime.

This aluminum polymer blanket is designed to retain body heat for shock victims while blocking cold, wind and moisture

Can also be used as an emergency stretcher and will support more than 250 pounds if not punctured

Unfolded, measures 54" x 84"

Weighs 2 oz.



CPR MICROMASK

SPECIFICATIONS

One-way, non-rebreathing valve
3M Filtrete Two-Way Filter - helps to protect both patient and rescuer
Large valve opening for maximum ventilation volume with minimal effort
Latex-free, soft, blue nitrile gloves included
Can be utilized with bag mask resuscitators
Soft mask conforms to various facial features and provides an excellent seal
Suitable for adults, children, or infants
Customized versions available - add your groups name, logo, or slogan (minimum order of 300)
Adjustable cuff inflation for even better facial conformity



EMERGENCY SHOWER



EMERGENCY VESTS

SPECIFICATIONS

5 point breakaway system guarantees vest can easily be removed if caught in car door or during confrontations
Zipper front can also be ripped away and provides quick on or off capabilities
Silver die cut reflective chevrons on back are a first for traffic vests
Side access cutouts ensure rapid availability to weapon
Orange and lime green color combination creates an ANSI Class 2 vest with better visibility
Attached mic and pen holder



HAND-HELD PULSE OXIMETER



HEAD IMMOBILIZER



HEAD IMMOBILIZER ADULT -GALLS IE015
HEAD IMMOBILIZER ADULT (TD+1)

SPINE BOARD

SPECIFICATIONS

SPINAL BOARD CHILD 8-ARMSTRONG AE640-SB8
SPINAL BOARD SB-1, ORANGE
SPINAL BOARD SB-3, ORANGE-dont enter
SPINAL BOARD YELLOW SB026
SPINAL BOARD SB-5, ORANGE
SPINAL BOARD SB-5A, ORANGE
SPINAL BOARD 3, ORANGE-SB3
SPINAL BOARD SB026YELLOW (DYNAMED)
SPINAL BOARD 1, ORANGE
SPINAL BOARD SB-7
SPINAL BOARD CHILD 8 ORANGE SB-8
SPINAL BOARD 5, ORANGE-SB5



K.E.D. EXTRICATION DEVICE

SPECIFICATIONS

K.E.D. has horizontal flexibility for ease of application in cramped areas, and vertical rigidity for spinal stability and safety. It is an invaluable product for any emergency team.

Rapid application in tight spots
Firm support for the victim's head, neck, and spine

Further assistance can be given to the victim while the K.E.D. remains in place:
CPR can be easily performed
MAST trousers can be applied without interference
Traction splint can be applied
Will not interfere with x-rays



HYDRO SERIES DELUXE BLS KIT

SPECIFICATIONS

Hydro Series bags offer great versatile style and features along with durable high performance waterproof finish.
Waterproof, durable, 1000 denier, PVC tarpaulin finish
Internal adjustable divider system
Heavy duty rubber feet to protect bottom of the bag
Shoulder strap and heavy duty handle
Front and side pockets
11"H x 22"W x 14"D



HYDRO SERIES ALS KIT

SPECIFICATIONS

Hydro Series bags offer great versatile style and features along with durable high performance waterproof finish.
Waterproof, durable, 1000 denier, PVC tarpaulin finish
Internal adjustable divider system
Heavy duty rubber feet to protect bottom of the bag
Shoulder strap and heavy duty handle
Front and side pockets
O2 compartment with protective sleeve
12"H x 24"W x 15"D



MAXI-MEDIC BAG WITH WATERPROOF BOTTOM

SPECIFICATIONS

This medium-sized bag provides plenty of room for Basic Life Support (BLS) Equipment for management of airways, burns, and skin traumas in addition to standard supplies. With it's waterproof bottom you can set this bag virtually anywhere - snow, puddles or mud - and be confident that your equipment will be dry when you need it. Customizable interior compartments allow you to adjust the storage to fit your needs.
1000 denier nylon
11 adjustable interior compartments to organize your supplies
2 zippered outside compartments for storage of bulkier items
Mesh pouch on lid for smaller items
Reflective striping and Star of Life for added visibility
Waterproof bottom
Shoulder strap
9"H x 20"W x 12"D
Imported



DIAGNOSTIC LAMP

SPECIFICATIONS

LED lamp for bright, white illumination
Durable CNC machined brass housing in a striking black matte finish
Positive feel power switch
Uses 2 AAA batteries (included)
5-5/8" long, 1/2" diameter



LEG TRACTION



OBSTETRICAL KIT

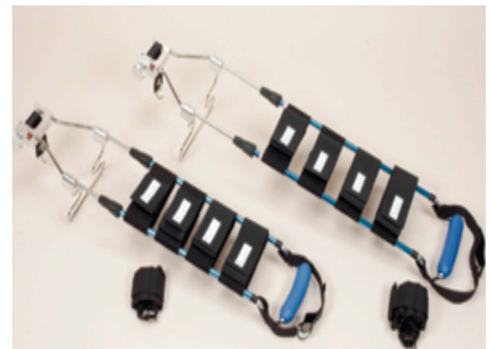


VACUUM SPLINT



Immobilizes injured areas without any external pressure
Eliminates the need for tape, boards, or guaze

TRACTION SPLINT



TRACTION SPLINT TS-2 FARETEC ,USA
TRACTION SPLINT CHILD
TRACTION SPLINT-ADULT
TRACTION SPLINT ADULT-GALLS

PROSPLINTS COMPLETE ADULT SPLINT KIT

SPECIFICATIONS

The AE-1800 includes wrist/forearm splint, full arm splints (small and large), full leg splints (small and large), universal combo splint, universal rib splint, hard e-collars (small and medium), and carrying case.

Quick application and removal
X-ray translucent/MRI compatible
Wipes clean for reuse
Folds for compact storage



MANIKINS

CPR KYLE THREE-YEAR-OLD CHILD MANIKIN

SPECIFICATIONS

Disposable non-rebreathing airway system that ensures sanitation, protecting students from the risk of cross infection.
Personal-use face pieces for each student that can be discarded at session's end, or easily sanitized and reused. They are simple to insert and use.
True-to-life anatomical landmarks aid skill acquisition
Lightweight, rugged, foam-filled body



CPR KEVIN INFANT MANIKIN

SPECIFICATIONS

Disposable non-rebreathing airway system that ensures sanitation, protecting students from the risk of cross infection.
Personal-use face pieces for each student that can be discarded at session's end, or easily sanitized and reused. They are simple to insert and use.
True-to-life anatomical landmarks aid skill acquisition.
A lightweight, rugged, foam-filled body.



CPR KIM NEWBORN MANIKIN

SPECIFICATIONS

Disposable non-rebreathing airway system that ensures sanitation, protecting students from the risk of cross infection.
Personal-use face pieces for each student that can be discarded at session's end, or easily sanitized and reused. They are simple to insert and use.
True-to-life anatomical landmarks aid skill acquisition.
A lightweight, rugged, foam-filled body.



PREMIE™ BLUE WITH SMARTSKIN™ PREMATURE SIMULATOR

SPECIFICATIONS

PREMIE Blue depicts a 28-week premature infant and includes an injection arm as well as an intraosseous leg. Students can intubate as well as perform BVM and CPR. PREMIE Blue changes colors based on a pre-selected condition and measures the effectiveness of airway ventilation and chest compressions. PREMIE Blue closely mirrors those admitted to neonatal intensive care and provides added realism to training.

Realistic airway with tongue, vocal cords, trachea, and esophagus for airway management exercises

Heart, lungs, airway, and ribs

Simulate "heelstick" maneuver for capillary blood sample

BVM or CPR exercises

Intubation plus suction

Bilateral lung expansion with realistic chest rise

View peripheral or central cyanosis as well as healthy skin tone

Use monitor to select rates of improvement and deterioration

Watch skin color change in response to the effects of your student

Pulse umbilicus using pulse bulb

Practice placement of umbilical lines

Simulate CPR with either the two-thumb encircling method or two-finger alternate compression method

Practice intraosseous access

Practice injection or intravenous techniques



PEDI® BLUE NEONATAL SIMULATOR · WITH SMARTSKIN™

SPECIFICATIONS

The instructor can present the neonate as healthy, with peripheral cyanosis, or with central cyanosis. PEDI Blue has the ability to change color based upon a preselected condition, and the effectiveness of airway ventilation and chest compressions. The effectiveness of the treatment determines the change in skin color (blue color for poor treatment, healthy color for proper treatment).

Realistic airway with tongue, vocal cords, trachea, and esophagus

Heart, lungs, ribs, stomach, and liver

BVM or CPR

Oral or nasal intubation plus suctioning

Cricoid prominence for Sellick maneuver

Bilateral lung expansion with realistic chest rise

Patent umbilical vein



LITTLE JOE JR.

SPECIFICATIONS

Approximately seven years old, Little Joe Jr.'s realistic appearance and accurate anatomical landmarks make him an invaluable learning tool. Little Joe Jr. also features realistic head tilt and chin lift, easily manipulated airway, and non-rebreathing valve. All these characteristics combine to make Little Joe Jr. completely functional, durable, and easy to use.



LITTLE JOE

SPECIFICATIONS

Extremely sanitary. Prevents cross contamination with an individual face piece for each student and disposable, non-rebreathing airway.

Lifelike features. Head tilt/chin lift mobility. Plus, all essential landmarks, including navel for obstructed airway practice. Longer torso for abdominal thrusts. Realistic rib cage overlay for landmarking.

Quick clean up. After class, the inexpensive face pieces can be discarded, or sanitized and reused. Airways are disposable.

Durable and portable. Built to withstand high-volume usage. Easy to transport.



ACTFAST™ ANTI CHOKING TRAINER

SPECIFICATIONS

The training vest can be used in a variety of positions to create realistic scenarios, including standing, sitting, and laying on the ground. Also, it allows the student to practice self rescue using a countertop or chair.

Transparent PVC airway allows user to see release of obstruction.

Large easy snap buckles with adjustable straps. One size fits all.

Back Pad (red only) crumple zone for practicing back blows.

Navel aids in correct hand placement.



PATIENT EDUCATION TRACHEOSTOMY CARE MANIKINS

SPECIFICATIONS

The Patient Education Tracheostomy Care Manikins are ideal for teaching patients and caregivers the skills they will need to perform at home. The Adult Manikin includes oral and nasal passages, the pharynx, epiglottis, trachea, esophagus, tracheostomy site, and cricoid cartilage. Students can practice suctioning techniques, cuff inflation, dressing changes, and other techniques. The Infant Manikin can be used to teach parents and caregivers basic tracheostomy care skills.



ADVANCED GRANDMA CHASE

SPECIFICATIONS

Advanced Grandma Chase is the most comprehensive patient care manikin available. Designed specifically for nurse training programs, this lifelike, durable manikin allows high-quality practice and instruction. Advanced Grandma Chase offers all the realism of the Basic Grandma Chase Manikin except tracheostomy, plus the added features below:

- Carotid pulse
- Full-functioning airway with tongue, epiglottis, esophagus, and trachea with vocal cords
- Right and left bronchus for assessing intubation skills
- Articulating jaw
- Chest compresses for CPR
- Intramuscular injection sites at the deltoids, right gluteal muscle, and at the thighs
- I.V. practice capability on the right forearm and dorsal side of right hand
- Interchangeable male/female genitalia with full-functioning catheterization - voids fluids
- Enema capability
- Stomach reservoir
- Lightweight and portable with detachable arms and legs



KERI NURSING MANIKINS

SPECIFICATIONS

Includes most of the features of the Complete Keri Manikin, except internal fluid reservoirs, ostomy care, enema administration, oral and nasal lavage, gavage, and suctioning.



NOELLE™ BIRTHING AND MATERNAL SIMULATOR

SPECIFICATIONS

This comprehensive teaching system combines the features of a patient care manikin and an advanced childbirth simulator. It is designed to provide a complete birthing experience before, during, and after delivery.



The NOELLE Birthing and Maternal Simulator includes one articulating birthing baby with placenta, one resuscitation baby with intubation airway and umbilical catheter site, four umbilical cords, four dilating cervixes, two umbilical clamps, three vulva for postpartum suturing, talcum powder and lubricant, instruction manual, and carrying case.

Life-size, articulating, full-body female
Intubation airway with chest rise
I.V. arm for meds and fluids
Removable stomach cover

Practice Leopold Maneuver
Multiple fetal heart sounds
Automatic birthing system
Multiple placenta locations

Measure head descent and cervical dilation
Replaceable dilating cervixes
Practice postpartum sutures on vulval inserts

GRANDMA CHASE PATIENT CARE MANIKIN

SPECIFICATIONS

Includes sweat suit and interchangeable genitalia in carrying case.

Training Applications:

Patient Transfer/Handling: Trains for changing occupied beds, changing patients' clothing, positioning in chairs and wheelchairs, transfer from bed to chair, assisting patients to bedside commode, assisted bedpan use, and prepping and positioning a patient for surgery.

Patient Hygiene: Trains for bed baths, flossing and brushing teeth, decubitus ulcer care, washing and combing hair, shaving, and fingernail care.

Other Applications: Trains for bandaging fingers and toes, administering liquid feedings, catheter insertion, and ostomy care.

Manikin Features:

Head and Hair: The neck is flexible. The grey hair can be shampooed and combed.

Nose and Mouth: Either may be used for stomach tube insertion. Teeth may be flossed and brushed.

Eyes and Ears: One ear accepts a hearing aid. Ears can be cleaned with dry cloth or cotton swab. Both eyes may be irrigated with eye drops and are removable.

Hands and Toes: Individual fingers and toes make Grandma Chase perfect for bandaging practice.

Male and Female Genitalia: Both are provided and held in place with Velcro. Catheterization or a vaginal douche may be simulated without passing fluid. Perineal care may be practiced.

Joints: Manikin bends at the elbow, knee, shoulder, and hip.

Decubitus Ulcer: A foam decubitus ulcer is included and may be placed anywhere on the manikin to simulate a bed sore.

Other Features: Grandma Chase also comes with a tracheostomy, a rectum that accepts rectal thermometers or water enemas, and an ostomy stoma.



GERI GERIATRIC NURSING MANIKINS

SPECIFICATIONS

Same great features as the Complete Geri, plus these great heart and lung sounds.

Heart sounds include normal, holosystolic, systolic click, aortic regurgitation, mid systolic, atrial septic defect, mitral stenosis, S3 gallup, PDA, pulmonary stenosis, S4 gallup, and VSD.

Lung sounds include ...



RESCUE RANDY

SPECIFICATIONS

Rescue Randy is a rugged, life-size adult manikin designed to simulate victims for emergency training programs. Randy's extra-tough, steel-framed body and flexible major joints can be flexed to fit any rescue scenario.

Rescue Randy is filled with a weighted foam that emulates both the weight and resiliency of a human body.

Ideal for training exercises:

Extraction of victims from vehicles
Fire-rescue from smoke-filled rooms
Removal of victims from accidents

Application of anti-shocktrousers
Immobilization/restraint techniques
Suspended victim scenarios

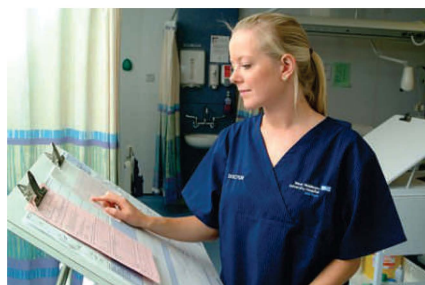


CASUALTY SIMULATION KITS

SPECIFICATIONS

The Deluxe Casualty Simulation Kit contains seven bleeding strap-on wounds and fifteen never before seen moulage stick-on wounds. The full line of accessories allows you to create seventy individual wounds. Wounds include lacerations, fractures, burns, projectile entry, and much more. You can then use the included make up to create realism in your evolutions. The kit comes packaged in a carry case and contains instructions.





LINEN, UNIFORMS AND SHOES

DOCTOR COATS AND LAB COAT



Size: S-XXL

Description : A stylish and figure flattering lab coat features a notch collar, front and back princess seams, angles front patch pockets, four big plastic buttons and vented back.



Size: S-XXL

Description : A male lab coat features two roomy patch pockets, a chest pocket with a pencil stitch, five plastic buttons and vented back. big plastic buttons and vented back.



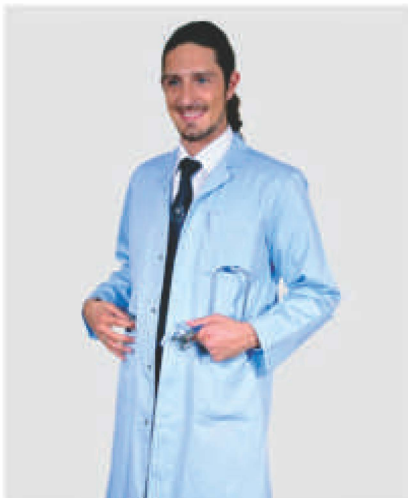
This button front, IPAD Unisex lab coat features a total of six pockets. The dropped waist seam has entry into two IPAD sized pockets with button tab closure for extra security. Also included are one outside chest pocket, three inside pockets and one chest pocket. A center back seam with vent completes this style. Center back length: 40"

NURSING UNIFORM



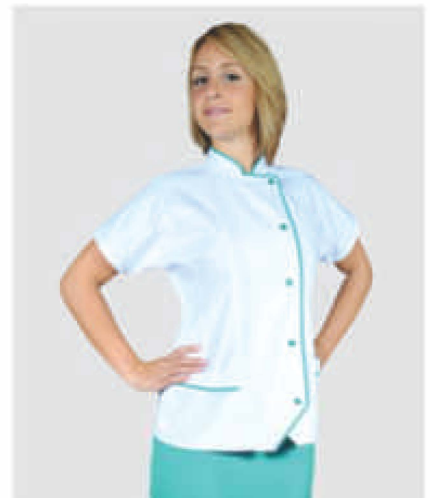
Size: S-XXL

Description : A female lab coat features two roomy patch pockets, a chest pocket with a pencil stitch, six plastic buttons and vented back.



Size: S-XXL

Description : A male light blue coat features lapel collar, two roomy patch pockets, a chest pocket with a pencil stitch, four concealed steel buttons and vented back.



Size: S-XXL

Description : A chinese collar top features contrast piping, two side roomy patch pockets with piping. Front neckline has stitch detail, Lightweight skirt, back zipper and back walking slit.

NURSING UNIFORM



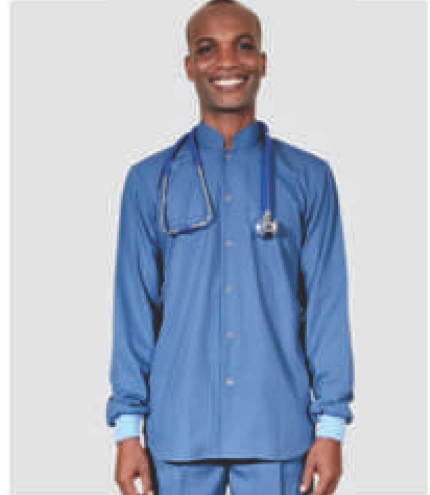
Size: S-XXL

Description : A junior fit round neck top features contrast dyed to match buttons and piping on the neck, two roomy contrast patch pockets, side vents. Trouser tailored waistband and two quarter side pockets.



Size: S-XXL

Description : Lapel collar top features a fashion stitch detailing along with five plastic contrast buttons, long sleeves, two roomy patch pockets with piping and one chest pocket with piping. Trouser tailored waistband and two quarter side pockets.



Size: S-XXL

Description : A chinese collar jacket features knit cuffs, a snap closure with stainless steel buttons. Trouser tailored waistband, two quarter side pockets and one back pocket.

PLAIN SCRUB TOPS



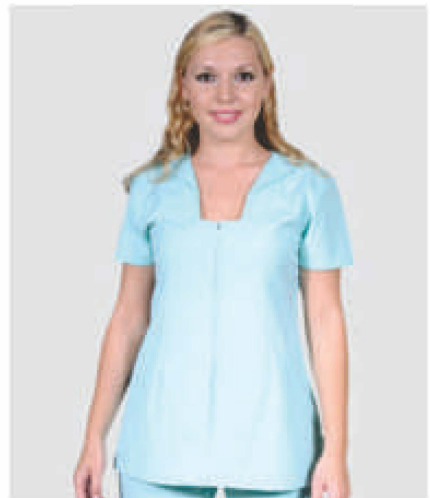
Size: S-XXL

Description : This innovative top shapes and slims the body! V neckline with soft and stretchy side panels in contrast knit.



Size: S-XXL

Description : Men's Fit color blocked v-neck features white sleeves and maroon top.



Size: S-XXL

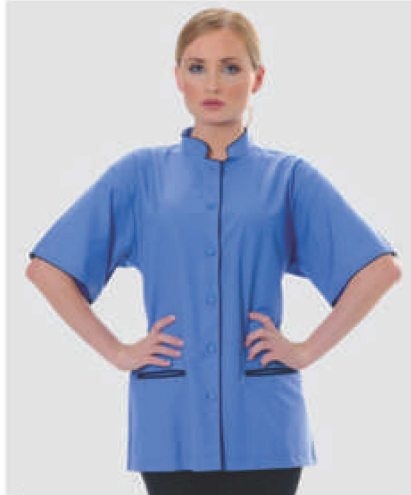
Description : An innovative missy fit top features a square neckline, bust darts for shaping, and opening zipper at the front.

PLAIN SCRUB TOPS



Size: S-XXL

Description : Original fit top features a stripe neckline opening with white and blue color, bust darts for shaping and chest stripe pocket.



Size: S-XXL

Description : Chinese collar top features short sleeves, opening with six plastic buttons, two down pockets with piping. Trouser tailored waistband and two quarter side pockets.



Size: S-XXL

Description : Contrast lapel collar top features short sleeves, opening with five plastic buttons, two side roomy patch pockets and one chest pocket with contrast piping. Trouser tailored waistband and two quarter side pockets.

PATIENTS GOWNS



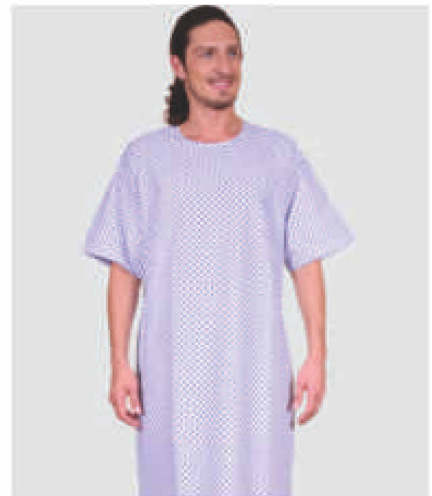
Size: S-XXL

Description : Female classic styling in x box print features wrap-around side tie to prevent gaping and 3/4 sleeves



Size: S-XXL

Description : Round neck cut and sew styling in contrast piping and raglan short sleeves features wrap-around side tie to prevent gaping.



Size: S-XXL

Description : Classic styling in a big x box print features wrap-around side tie to prevent gaping and 3/4 sleeves.

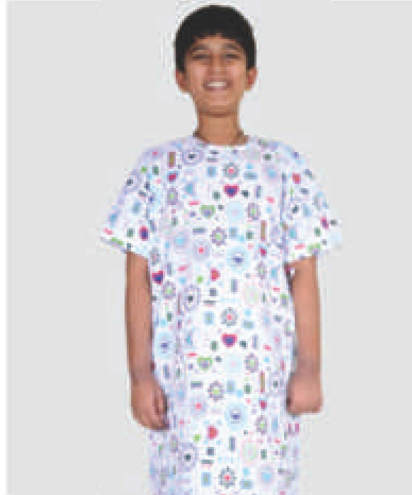
PLAIN SCRUB TOPS



Size: S-XXL

Description : Classic styling in a fur-ever friends print features wrap-around side and back tie to prevent gaping and 3/4 sleeves.

PEDIA GOWN & PAJAMA SUIT



Size: : 1 to 15 Years

Description : Classic styling in a peace talk print features round neck, short sleeves, wrap around back tie to prevent gaping.



Size: 1 to 15 Years

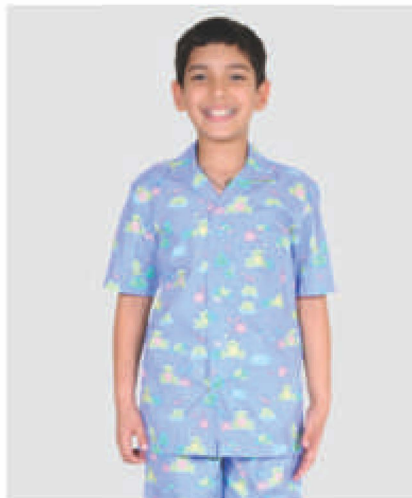
Description : Classic styling in a ring it up print features round neck, short sleeves and wraparound back tie to prevent gaping.

PEDIA GOWN & PAJAMA SUIT



Size: 1 to 15 Years

Description : Classic styling in a fur-ever friends print features round neck with white piping, short sleeves with white piping and wrap around back tie to prevent gaping.



Size: : 1 to 15 Years

Description : Classic styling in a lil' rabbit print features lapel collar, short sleeves, full front open with stainless steel buttons, one chest pocket. Pajama with full elasticated waistband.

SURGICAL GOWN & COVERALL



Size: S-XXL

Description : A round neck surgeon gown features white piping, long sleeves with knit cuffs and wrap around back tie to prevent gaping.

SURGICAL GOWN & COVERALL



Size: S-XXL

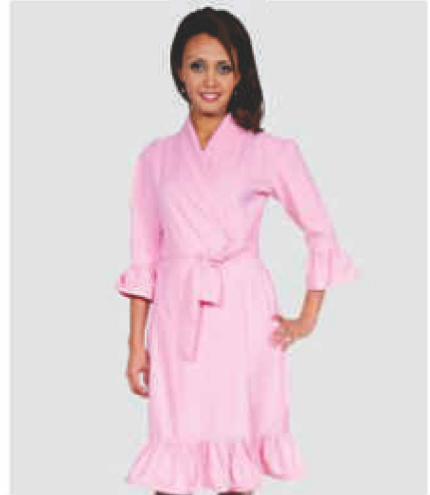
Description : A round neck surgeon gown styling water repellent features long sleeves with knit cuffs and wrap around back tie to prevent gaping.



Size: S-XXL

Description : A surgeon coverall features round neck with stainless steel buttons, long sleeves with knit cuffs.

PATIENT ROBE



Size: S-XXL

Description : Front opening, spacious design with 3/4 length dolman sleeves wide cross-over with a tie belt attached at center back, lightweight and cozy.

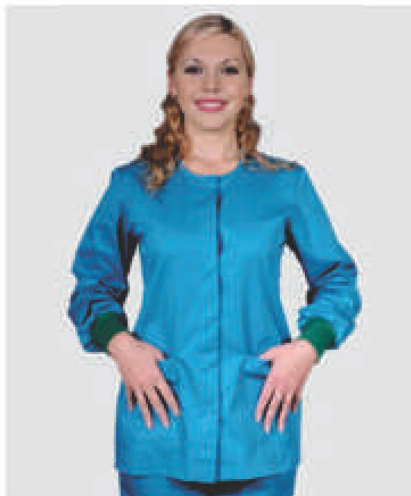
PATIENT ROBE



Size: S-XXL

Description : Female classis styling in x box print features wrap-around side tie to prevent gaping and 3/4 sleeves

WARMUP TUNICS



Size: S-XXL

Description : Round neck with long sleeves with knit cuffs, concealed stainless steel buttons, two roomy patch pockets. Trouser tailored half elastic waistband with ties.

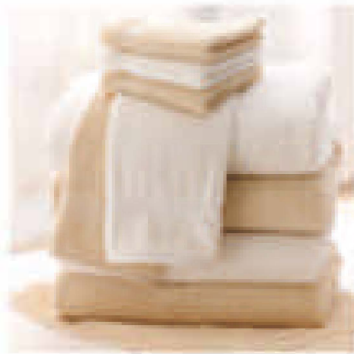
SURGICAL GOWN & COVERALL



Size: S-XXL

Description : A protective white jacket features stainless steel buttons, two roomy patch pockets, and one chest pocket. Trouser tailored half elastic waistband with ties and two quarter side pockets.

LINEN



MEDICAL SHOES

